



OTR RETREAD & REPAIR

PRODUCT

CATALOG

OUR COMPANY

For over four decades, we have provided our customers with a quality of product that can only be achieved through honest hard work and dependable service.

We continue to reinvest into our business by advancing our technology and training, in order to exceed market standards and deliver new and perpetual capabilities for the OTR industry.



OUR MISSION

To bring value to our products through the building of business partnerships. Expanding our roles as not only a retread and repair provider but offering viable and reliable services throughout the life of a tire.



Office Info • P.O. BOX 236 • 5400 STATE ROUTE 93 • OAK HILL, OHIO 45656
(Telephone) 740-682-7721 • (Fax) 740-682-0530
www.hhindustriesinc.com

Ken Daniels

kdaniels@hhindustriesinc.com
740-682-7721

Keith Clark

kclark@hhindustriesinc.com
740-288-5005

Allen Simpson

asimpson@hhindustriesinc.com
740-395-1990

Michele Clark

mclark@hhindustriesinc.com
740-682-7721

JT Davis

jtdavis@hhindustriesinc.com
740-682-7721

Noah Hickman

nhickman@hhindustriesinc.com
740-682-7721

Brian Thompson

bthompson@hhindustriesinc.com
740-288-5357

Rusty Hatten

rhatten@hhindustriesinc.com
740-418-5800

Ronnie Moore

rmoore@hhindustriesinc.com
740-418-7977

Ashley Hammond

ahammond@hhindustriesinc.com
740-682-7721

SCULPTURE RETREAD

(Loader/Articulated)

Customized tread designs, rubber compound selections, and the capabilities for retreading foam filled and solid tires makes sculpture retreading the most diverse option available on the market today.

- Causes less casing deterioration than other retreading options, which allows the possibility of retreading a casing multiple times.
- H&H can develop the best fit for specific applications to provide the best cost per hour.

Tread Designs: *More Patterns Available Upon Request*



XHA2



RT4A



LCC



VJT

Other Tread Designs Available:

H&H's cut treads allow for an unlimited number of tread design options. Each design can also be cut at an E-3, E-4, or L-5 tread depth.



VSNT



GP-4D



1/2 TRACK



VTS



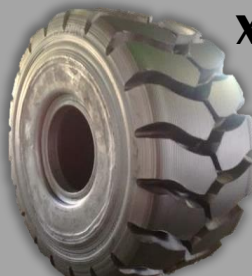
XADN



RB-31



XMINE



XLD D2



XTXL



XLD

SCULPTURE RETREAD

(Haulage/Port)

HHR



Tread Designs:

More Patterns Available Upon Request

XHD



VMTP



**XTRA
GRP**



Other Tread Designs Available:
H&H's cut treads allow for an unlimited number of tread design options. Each design can also be cut at an E-3, E-4, or L-5 tread depth.

VRLS



XZM



VRQP



X-Quarry



VCHSZ



Y-523



Smooth



NDF



MODIFIED SCULPTURE RETREAD

(MSR)

The modified sculpture retread was developed here at H&H in order to give the sculpture retread more of a new tire look.

- MSR gives the tread face and shoulder a textured finish and eliminates the strip line appearance.
- Available for every size / tread design



XDT



XHA2



NEXUS PRECURE RETREAD

The premier style of OTR retreading that offers excellent appearance as well as performance.

- Less heat build up and less casing deterioration compared to Mold retreads
(No cracking on the sidewall/shoulder area)
- Foam Filled & Solid Tire capability
- H&H Industries would like to announce a major investment in our retread process by acquiring 18 OTR molds in varying tread designs capable of retreading tire sizes from 24" up to 35/65-33 and 27.00-49 from Continuum.



H&H has been leading innovations in the precure market for more than 20 years



VUT



XHA



VSNT



VMTP



XDT



MOLD RETREAD

Mold retreads are a staple in OTR industry. Offering a great appearance and excellent performance in the correct applications.

➤ High Cut/Chip protection

Haulage

Molds:

24.00X35
24.00R35
27.00X49
27.00R49
33.00X51
33.00R51



RT4A+



VRLS



**XTRA
GRP**

The Mold retread tends to run best in a low heat application. They are excellent for loader applications due to the customized compounds we have developed through our rubber manufactures.

SMOOTH



1/2 TRACK



GEAR LUG



Loader Molds:

35/65X33
35/65R33
45/65X45
45/65R45
50/65X51

SOLID/FOAM FILLED RETREAD

- Economical / Huge Cost Savings
- Specific rubber compounding to best fit application
- Cores can be retreaded several times
- Precure retread availability on many sizes
- Expanded Wheels, Press-On, and Wheel capabilities



VUT

**PRESS-ON SOLIDS
PRECURE**

**PRESS-ON SOLID
SCULPTURE**

SDS

SOLID SCULPTURE

Smooth

SLCC



FOAM-FILLED PRECURES



SPECIALTY SERVICES

- Variety of different sizes available for retread and repair.
- Provides an economic alternative to new tires for multiple industries (Forestry, Agriculture, Etc.)
- Heat Shields to help increase a new tire's longevity.

FORESTRY RETREAD

SKD



OVERBUILDS/HEAT SHIELDS

L6-5



FLOATATION RETREAD

FL-328



TWEEL RETREAD

LCC



XM



**Tractor Tires excluded from retreading, but can be processed for repairs.*

WORKHORSE SOLIDS

Built from the ground up. Our WORKHORSE solid tires can be put on your existing wheels or with custom fabrication.

- Specific rubber compounding to best fit application.
- Custom Tread Designs
- Retreadable core
- Custom OD's (*Overall Diameter*) available



XGL



ND LCM



Smooth

STOCK INVENTORY

H&H Industries carries the largest inventory of used tires and casings in the nation.

Used Tires: Economical option for saving money. Can use specifications to correspond with other tires on a machine. Used for spares when customers need to replace a tire with an injury.



Stock Casings: Great alternative to replace rejected casings. Can be ordered to supply wheel positions. Cuts turn time down due to on the spot availability.



OTR CERTIFIED REPAIRS

H&H Industries maintains the highest quality repair standards through constant training and certification.

- Everything from standard spot & section repairs, to cable replacement
- Capable of salvaging damaged tires that others cannot
- H&H invests in training to offer maximum safety
- Multiple manufacturer repair certifications:
 - ✓ **REMA TIP TOP**
 - ✓ **PATCH RUBBER**
 - ✓ **TIRE REPAIR SOLUTIONS**



H&H TIRESYSTEM

Program access allows you to:

- Search your entire list of tires sent to H&H
- View pictures of injuries that caused your tire to reject
- See an itemized list of repairs performed on each individual tire
- Access previous invoices

CUSTOMER	TAG NO	SERIAL NO	WO NO	BRAND	SIZE	TREAD TYPE	DESIGN	DEPTH	32	PLY	STOCK TYPE	STATUS	PHOTOS	INVOICE	REPAIRS
Belleber Tire Svc.	C80013	JB00013	8003C	YOKOHAMA	29.5R-25	RB-31	E-3	43	**	CU	Finished				180-BEAD REPAIR x1, SH-SECTION x1, TREAD SPOTS x12
Belleber Tire Svc.	C80014	JB00014	8003D	MICHELIN	35/65R-33	XLD D2	L-5	50	*	CU	Finished				
Belleber Tire Svc.	C80015	JB00015	8003E	MICHELIN	35/65R-33	XLD D2	L-5	55	*	CU	Finished				SW-REIN x1
Belleber Tire Svc. - Dayton	C81002	81002	81000C	MICHELIN	20.5R-25	PST	XHA	E-3	38	*	CC	Reject			
Belleber Tire Svc. - Ashland	A13619			BRIDGESTONE	29.5R-25	VLT	E-3	42	*	SU	Processing				SH-SECTION x1, LINER SPOTS x2, 180-BEAD REPAIR x2, SPOTS x5, SW-REIN x1
Belleber Tire Svc. - Ashland	A20615			MICHELIN	29.5R-25	XHA	E-3	38	**	SU	Processing				C-SECTION x1, SPOTS x1

H & H INDUSTRIES | bellebertire@gmail.com | Logout | Change Password

Apply Clear Tag No. All Items checked Adv Filter H&H

Tag No. C80024

too much steel in tread - reject

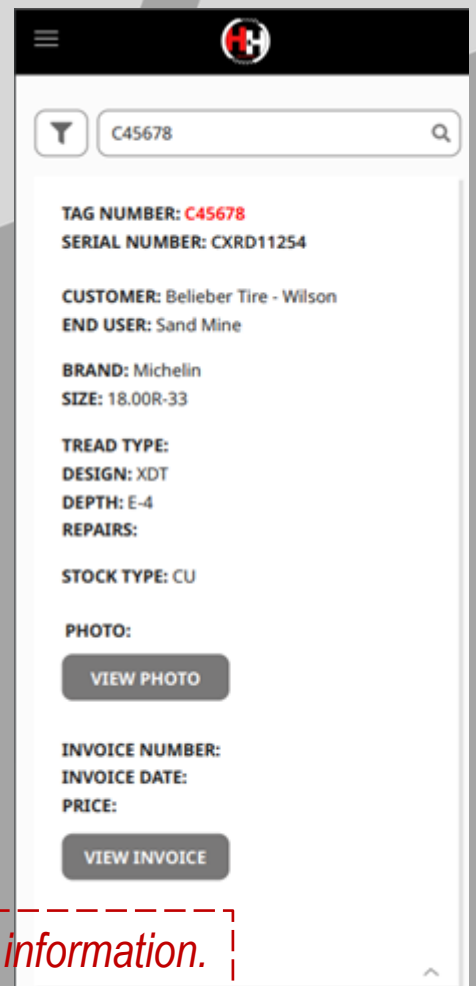
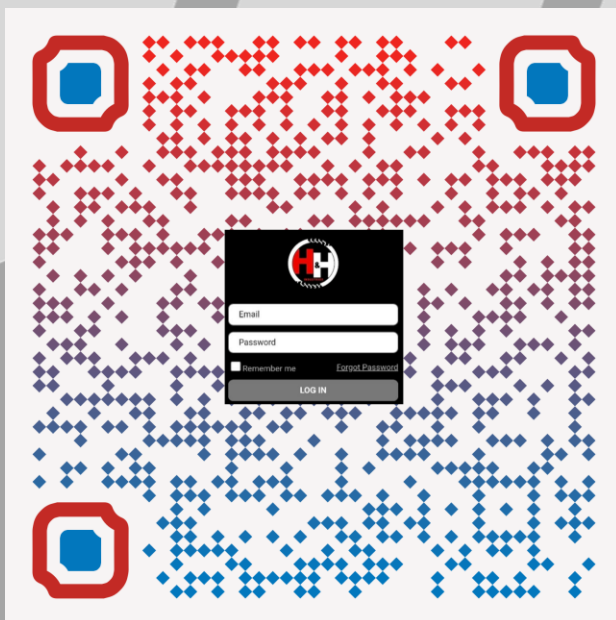
CUSTOMER	TAG NO	SERIAL NO	WO NO	BRAND	SIZE	TREAD TYPE	DESIGN	DEPTH	32	PLY	STOCK TYPE	STATUS	PHOTOS	INVOICE	REPAIRS
Belleber Tire Svc.	C80013	JB00013	8003C	YOKOHAMA	29.5R-25	RB-31	E-3	43	**	CU	Finished				180-BEAD R
Belleber Tire Svc.	C80014	JB00014	8003D	MICHELIN	35/65R-33	XLD D2	L-5	50	*	CU	Finished				
Belleber Tire Svc.	C80015	JB00015	8003E	MICHELIN	35/65R-33	XLD D2	L-5	55	*	CU	Finished				SW-REIN x1
Belleber Tire Svc. - Dayton	C81002	81002	81000C	MICHELIN	20.5R-25	PST	XHA	E-3	38	*	CC	Reject			
Belleber Tire Svc. - Ashland	A13619			BRIDGESTONE	29.5R-25	VLT	E-3	42	*	SU	Processing				SH-SECTION SPOTS x5, S
Belleber Tire Svc. - Ashland	A20615			MICHELIN	29.5R-25	XHA	E-3	38	**	SU	Processing				C-SECTION
Belleber Tire Svc. - Ashland	C80024	JB00024	8005D	GOODYEAR	33.00R-51	RL4H	E-4	84	**	CU	Reject				
Belleber Tire Svc. - Ashland	C80026	JB00026	8006A	MICHELIN	18.00R-25	PST	XHA	E-3	48	**	CC	Processing			C-REIN x1
Belleber Tire Svc. - Ashland	C80027	JB00027	8006B	MICHELIN	18.00R-25	PST	XHA	E-3	48	**	CC	Processing			

Call us today to get set up with your log in information.

H&H MOBILE FRIENDLY TIRESYSTEM



Whether you're in your office or out in the field H&H is bring all your tire data to your mobile device.



Call us today to get set up with your log in information.

H&H continuing to set the standard in our industry

28 • November 7, 2022, TIRE BUSINESS

Visit us on the web at www.tirebusiness.com

H&H plans tire retread plant upgrade

OAK HILL, Ohio

OTR tire retreader H&H Industries Inc. — in collaboration with Ohio state and regional economic development authorities — is expanding production capacity at its Oak Hill plant with a \$275,000 investment.

The investment in a higher capacity peeler/buffer will expand the company's existing capacity for larger-sized OTR tires while increasing efficiency and productivity, H&H Industries President Noah Hickman said.

The investment, being carried out with assistance from JobsOhio, Ohio Southeast Economic Development (OhioSE), and the Jackson County Economic Development Partnership (JCEDP), will create five new jobs

at the company, which is marking its 50th year in business in 2022.

"H&H Industries' commitment has always been to reinvest in our



business thereby allowing us to expand operations and give us the ability to create more jobs for our local residents, which has always been a priority to us," Hickman said.

"Southern Ohio has been a key factor in our success and the support we get from local communities and Jackson County, in general, has always been appreciated."

The investment — buoyed by a \$25,000 JobsOhio Inclusion Grant and other incentives by the county and local agencies — will go toward the purchase and installation of an Akar #049 Peeler-Buffer, which is capable of buffing tires up to 63-inches in rim diameter, Hickman said.

The new buffer, being supplied by Central Marketing, will replace a buffer that's been in operation since 2005, Hickman said. In all H&H has three inflatable and three manual-type buffers in operation at the 80,000-sq-ft. plant.

The new buffer will be placed in a 6- by 8-foot pit with a cyclone system for the removal of buffing dust and a conveyor system for the removal of rubber peels, Hickman said, adding

that all of H&H's buffings/peelings are sent to recycling centers.

JobsOhio supported the project with a \$25,000 Inclusion Grant and OhioSE assisted the company with the grant process. The JobsOhio grant provides financial support for eligible projects in designated distressed communities and/or for businesses owned by underrepresented populations across the state.

"We are proud that a global leader in the OTR industry like H&H Industries calls Jackson County home," JCEDP President Sam Brady said in a prepared statement.

"This investment by H&H only underscores the success and growth they have experienced by choosing to continue doing business in Ohio and Jackson County," Brady added.

"This project is a great example of a growing company making a critical investment to expand," OhioSE President Mike Jacoby said.

"We are grateful to our partners at JobsOhio for their investment in H&H Industries and the Southeast Ohio region, setting them up for long-term success in Jackson County."

Family-owned and -operated in Oak Hill since 1972, H&H Industries is among the largest independent OTR tire retreading companies worldwide. The company uses three manufacturing methods: sculpted tread, mold cure and precured tread.

Oak Hill is a village of about 1,500 residents in Jackson County in southern Ohio in what's designated as Appalachia.



H&H INDUSTRIES HOST TIA TRAINING CLASS




TIA BASIC ETS 200 LEVEL TRAINING

WHEN
April 22nd — 25th, 2024
8:00AM - 4:00PM

WHERE
H&H INDUSTRIES
5400 OH-93 Oak Hill, OH

INSTRUCTOR
MATT WHITE TIA-DIRECTOR OF TIRE SERVICE



MEALS
Lunch Provided
Mon, Tue, Wed

HOUSING
Housing Provided
Mon, Tue, Wed

SPONSORS

- Tire Industry Association
- King's Tire Service
- Airboss Rubber Solutions
- Boyd CAT
- AME
- Roma TinTop
- Fuller Brothers
- Myers Tire Supply
- Triple S Tire
- Bob Sumner Tire Co.



LOGISTICS / SERVICE



H&H Industries carries a full fleet of specialized trailers for fast, dependable, & hassle-free service

- Booms fitted and mounted on step deck cage trailers
- Aluminum flat bed trailer for solid tires / heavier weights
- Custom designed double drop trailers for hauling oversize tires



At H&H, the service we provide to our customers is one of our biggest priorities. We deliver products in a timely manner, with the fastest return time in the industry. When our trucks arrive, your products will be there, not four weeks out. We also offer emergency services to certain areas for when your customers need a tire ASAP.

- Noah Hickman (President/CEO)

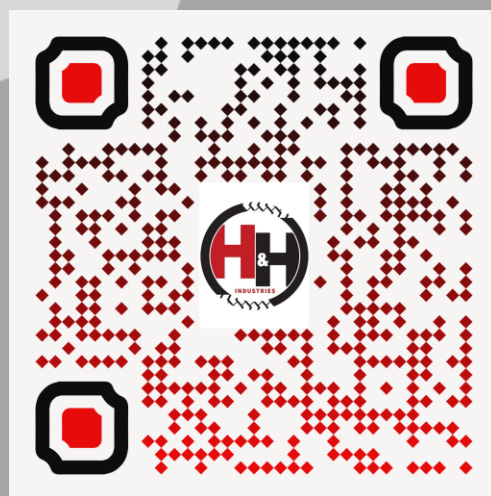
FOLLOW US **ONLINE** AND STAY CURRENT ON THE LATEST NEWS!

✓ Visit our website at www.hhindustriesinc.com for more information!

Our site contains information to help you, such as;

- A full introduction of H&H Industries and our history.
- Our full product line.
- Downloadable product catalogs, retread best practices, and warranty information.
- Services we provide to build our business partnerships.
- A news and events section.
- An online video of our facility that shows how we process your OTR tires and our state-of-the-art equipment.

FACEBOOK



H&H Industries

LINKEDIN



